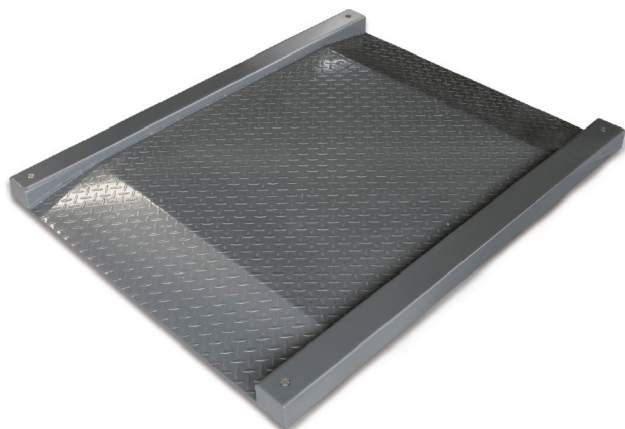


# KERN KFD 600V20M

**KERN**

Weighing bridge made of non-slip corrugated steel plate, lacquered



## Construction

Dimensions weighing platform (W×D×H)	1600×1220×95 mm
Material display housing	Plastics
Material weighing plate	steel, powder-coated
Material platform	steel, powder-coated
Dimensions weighing surface (W×D)	1000×1000 mm
Cable length	5 m
Display device cable length	5 m
Allowed cable length display device [Max]	30 m
Material load cell(s)	alloyed steel
Load cells - number	4
Levelling feet adjustable	✓
Wall mount	✓
Stand inclinable	✓

## Functions

Auto-off interval(s) in mains power mode	selectable
Auto-off interval(s) in battery mode/rechargeable battery mode	selectable
Tare function	manual (multi)
Function for averaging under unstable weighing conditions	✓
Sum memory function	✓
Underfloor weighing	None
IP protection - complete device	IP67 (load cell)
IP protection - load cell	IP67
IP protection - platform	IP67

## Power Supply

Input voltage power supply / power [Max]	110 V - 230 V AC
Input voltage device / power [Max]	12 V, 500 mA
Plug-in power supply type	Power adapter
Supplied power supply	Power supply unit
Plug-in power supply / adapter for countries - included with the delivery	EURO
Rechargeable battery optional	Rchrg. battery optional (factory)
Rechargeable battery charging time	10 h
Rechargeable battery operating time - backlight on	8 h
Rechargeable battery operating time - backlight off	35 h

## Category

Brand	KERN
Product category	Component
Product group	Weighing bridge
Product family	KFD-V20-IP67

## Measuring System

Construction type of the scale	Single-range balance
Weighing system	Strain gauge
Weighing capacity [Max]	600 kg
Readability [d]	0,2 kg
Linearity	± 0,4 kg
Reproducibility	0,2 kg
Tare range	-600 kg
Minimum weight [Min]	4 kg
Adjustment options	Adjusting with external weight
Recommended adjusting weight	600 kg (M2)
Stabilization time	2 s
Eccentric loading at 1/3 [Max]	0,4 kg
Loadcell type	ZEMIC H8C 0.5 ton

## Approval

CE mark	✓
Accuracy classe	III
Verification scale interval [e]	0,2 kg
Conformity assessment possible ex works	✓

## Display

Display type	LCD with backlight
Display digit height	52 mm

# KERN KFD 600V20M



Weighing bridge made of non-slip corrugated steel plate, lacquered

## Environmental conditions

Humidity of environment [Min]	0 %
Humidity of environment [Max]	80 %
Ambient temperature [Min]	-10 °C
Ambient temperature [Max]	40 °C

## Packing & Shipping

Readability force [d] (N)	2 d
Dimensions packaging (W×D×H)	1610×1250×360 mm
Net weight	125 kg
Shipping method	Freight
Net weight approx.	125 kg
Gross weight approx.	155 kg
Shipping weight	155 kg

## Services (optional)

Article number for adjustment at the location of installation	961-250
Article number for conformity assessment	965-230
Article number for DAkkS calibration	963-130

## Pictograms

### STANDARD



### FACTORY

